

LE CERF ROUGE

ROUGEMONT | SWITZERLAND



ROUGEMONT – GSTAAD

The Swiss alpine village of Rougemont is nestled in the heart of the Swiss Alps, just 10 minutes from Gstaad, centrally located and accessible to major ski destinations and cities of Switzerland.

Earning an official position as one of the most beautiful villages in Switzerland, Rougemont dates back from the religious Cluny order which received the land in 1080 AD from the Count of Gruyere. In 1569, the priory was replaced by the château of Rougemont, which became the residence of the bailiffs of Bern, who succeeded the Count of Gruyère. The area became part of the canton of Vaud in 1798, a canton that hosts known cities such as Montreux, Vevey and the Olympic Capital, Lausanne. The territory of the municipality is located in a mountainous forested region along the banks of the Sarine river.

Over the centuries, the typical south facing wooden chalets have been built in style by the local artisans who with great detail have painted poetic versus, the names of the chalet owners and their families. The villagers cultivate the land, make traditional objects and also perpetuate a culinary heritage whose tastiest symbol is Rougemont's "tomme" cheese.

Rougemont is a neighbour of the famous Gstaad town, which draws the international jet-set due to its exceptional restaurants, nightlife and all year round events. Both Rougemont and Gstaad are linked by the same ski area and to a region which benefits all together from 58 lifts and cable cars, an area of 250km that is specifically dedicated for downhill skiing and an additional 165 km for cross country skiing.

Other skiing resorts such as Saanenmoser, Lenk, les Diablerets, Leysin, Gryon, Villars, les Mosses can be reached within 45 minutes from Rougemont. The Glacier 3000, located between Les Diablerets and Rougemont welcomes snow enthusiasts all year round. The region also offers a full selection of other winter sports next to skiing, such as skijöring, sledging, bobsleigh, ice-skating and hot air balloon.

<https://goo.gl/maps/SWiqVt9AVb7R1hj47>



The region is truly a magnificent place for summer vacations. It's a destination with 300 km of trails and paths, a true paradise for hikers and mountain lovers. Typical sporting activities are mountain biking, rafting, canoeing, summer sledging, cycling, swimming and, a must in Rougemont, paragliding!

Summer like winter, the Gstaad promenade is one of the favourite destinations in Switzerland for both tourists and Swiss national to relax, shop, dine in the numerous restaurants and attend open air cocktail parties. The promenade is accessible only by foot, century old chalets, gorgeous flowers, fountains and a fresh air makes it a world known address. Luxury brands such as Prada, Hermes, Louis Vuitton, Dolce & Gabbana, Trois Pommes, Graff, Cartier, Moncler and Chopard have boutiques on the promenade. Between the boutiques, there are several restaurants with terraces and art galleries.

The Saanenmöser 18 holes golf course, situated 11kms from Rougemont and the Golf de la Gruyère in Pont-la-Ville, 18 holes golf course situated at a 45 minutes' drive are some of the nicest Alpine courses in the Switzerland.

In summer, the alpine lakes of Arnensee and Launensee are very attractive attractions. From beginners to advanced, the many trails for hiking and mountain biking are some of the most beautiful in the country. Swimming, having a Bbq and taking a small rowing boat are appreciated by both the locals and tourists. Both lakes offer charming restaurants.

Major events in the region:

- Beach Volleyball Major Series - Swatch Major Gstaad
- Menuhin Festival Gstaad
- Swiss Tennis Open Gstaad
- Country Night Gstaad
- Sommets Musicaux de Gstaad
- The Château D'Oex Balloon Festival
- Hublot Polo Gold Cup







TRADITIONS



PEAKS



CONNECTING TO NATURE



VIBRANT NIGHTLIFE

THE RESIDENCE

Built in 2014, together with the Hotel de Rougemont, this stunning residence is nestled in a typical Swiss chalet style property entirely made out of wood, stone and copper. The residence includes five apartments ranging from 200 sqm to 575 sqm.

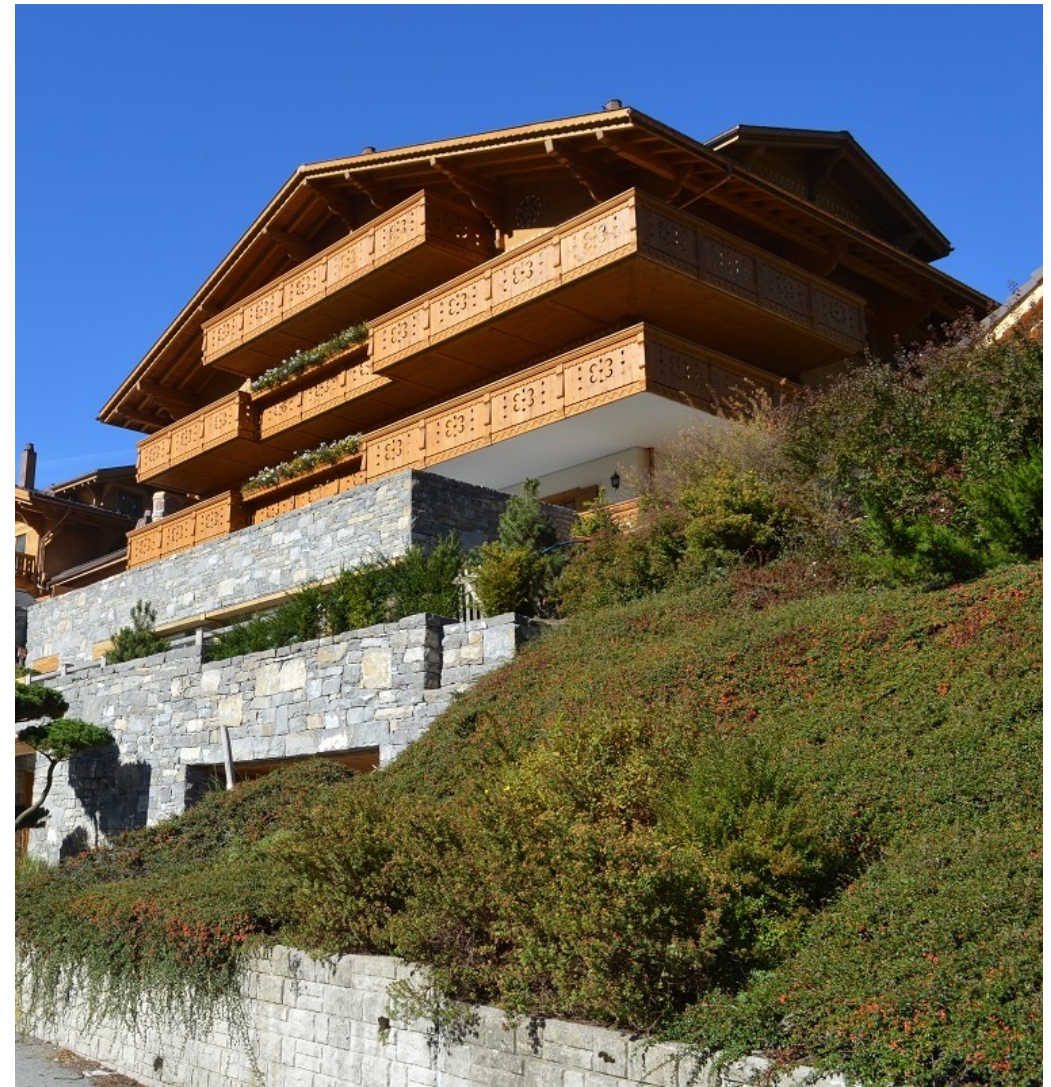
The location benefits from the proximity of Switzerland's main airports: Bern, Zurich and Geneva which are under 2.5 hours drive from Rougemont. The Saanen aerodrome, accessible for private jets and helicopters is only 5 minutes away by car from the Cerf Rouge. The famous Golden Pass train, linking Montreux to Zweisimmen passes by Rougemont, where the passengers enjoy a romantic retro ambiance inspired by the famous Orient-Express.

The apartment condominium is annexed to the Hotel de Rougemont, with an access for optional services provided by the hotel. The residences are accessible directly from the underground parking's by elevator or through the hotel main entrance (Hotel not open all year round).

Both the hotel and residences are in walking distance of the train station and village center. In 2014, the municipality created a pedestrian road towards the town, proving a faster and more quiet access. The residence is located on a residential street with very little traffic and the neighbouring properties are mostly single-family chalets.

The community of the building is managed by a local agency and is well maintained and managed. On the same floor as the apartment there is a washing room for the five apartments. Each apartment unit has its own washing area with cupboards, washing machine, dryer, sink and space for ironing.

The Cerf Rouge apartment has two spacious indoor parking spaces with storage space for equipment. The parking also provides a ski room with a heating system for the ski shoes and functional storage for sports equipment. Bikes can also be stored in this area. Guest parking is located on the road.





THE INTERIOR

The 213.58 m2 interior of the apartment is designed in warm colours, constructed with great attention to detail. The main living space features a spacious lounge area with fireplace and an open space dining area with glass sliding doors to the kitchen. The large windows are unique for an apartment in this region, giving a great sense of inside – outside.

The kitchen features high quality kitchen equipment, storage and is entirely made out of wood and grey marble stone. A bar counter provides a perfect space for a breakfast or morning coffee with direct access to the terrace.

The apartment three bedrooms feature:

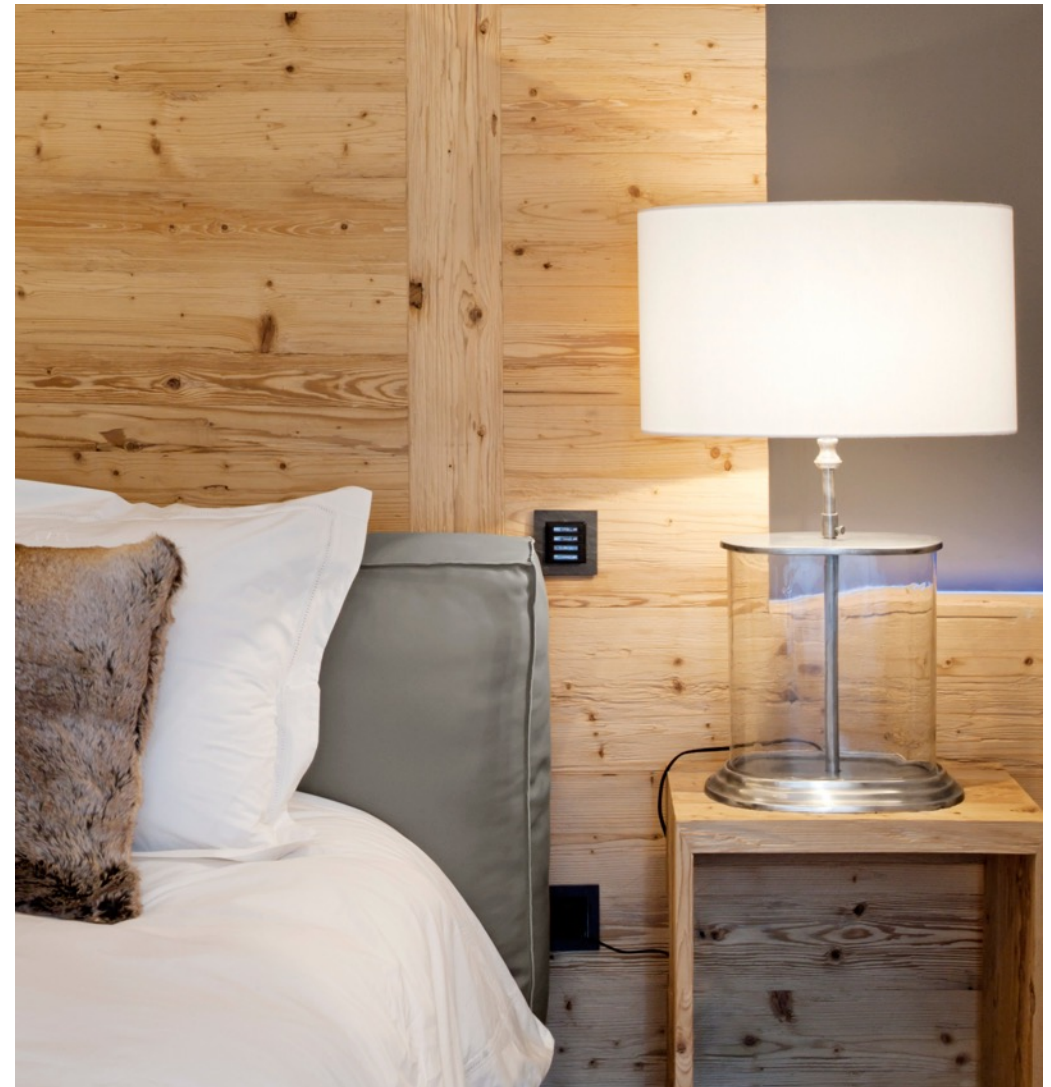
- One master suite with a dressing in the hallway, separate WC, a beautiful marble bathroom with bathtub and shower. The bedroom has the direct access to the south terrace;
- One bedroom suite with 2 bunk beds for four people or a large double bed, a dressing room and a spacious bathroom with a bathtub, shower and separate WC;
- One bedroom suite with wardrobes, bathroom with shower and bathtub and a separate WC.

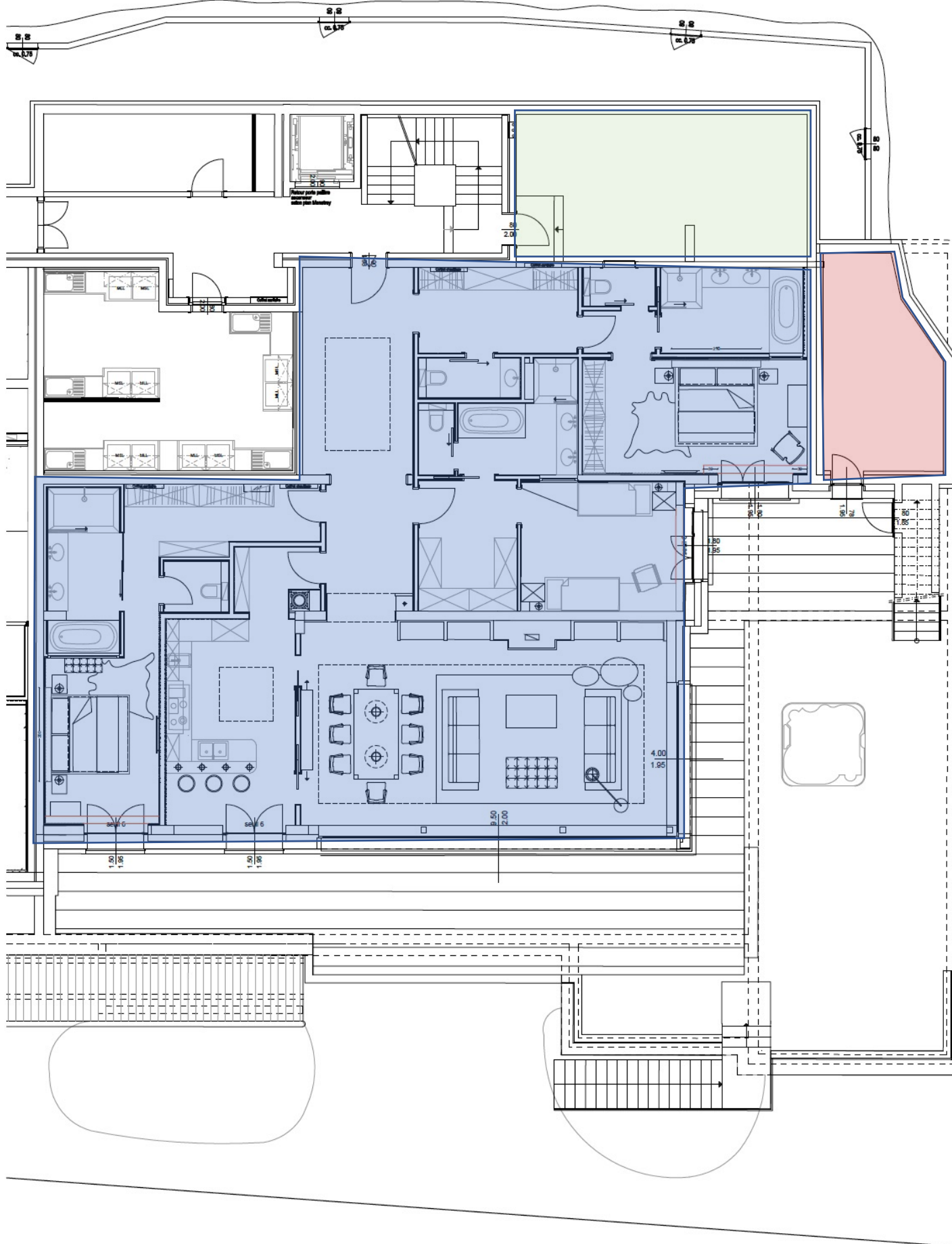
Then bedrooms are designed exceptionally warm, with light ceilings, and walls covered in the typical Swiss chalet style old wood. Contemporary furniture gives the bedrooms a nice touch. The bathrooms are designed with great attention to detail, high quality marbles and sanitary equipment. In total the three bedrooms can accommodate up to 8 people.

Included in the apartment is a large 30 sqm storage on the same floor, with an access from the common area hallway and also with direct access from one of the bedrooms.

* Interior couches were changed in 2021 to brown leather couches

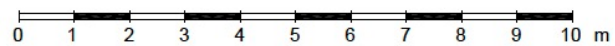
* Bunk beds can be changed to double bed on request





Blue - Interior	213.58 m2
Green – Basement	30 m2
Red – Exterior basement	16.59 m2
Terrace –	122 m2

General layout plan





LIVING ROOM



LIVING ROOM



LIVING ROOM



LIVING ROOM



LIVING ROOM



DINING AREA



KITCHEN



KITCHEN



BEDROOM 1



BEDROOM 1



BATHROOM 1



BATHROOM 1



BATHROOM 1



BEDROOM 2



BEDROOM 2



BATHROOM 2

THE EXTERIOR

The apartment is located on the ground floor with 123 sqm of terrace and a garden of around 80 sqm featuring a jacuzzi, providing stunning views to the mountains. Under the rain, snow, sun or under the stars, the jacuzzi is an ideal place to relax and enjoy the surrounding scenery.

From the garden, there is a stone staircase that leads one floor down with a direct access to the road. Several meters further that road there is a shuttle bus provided by the municipality which goes down to the ski station of Rougemont.

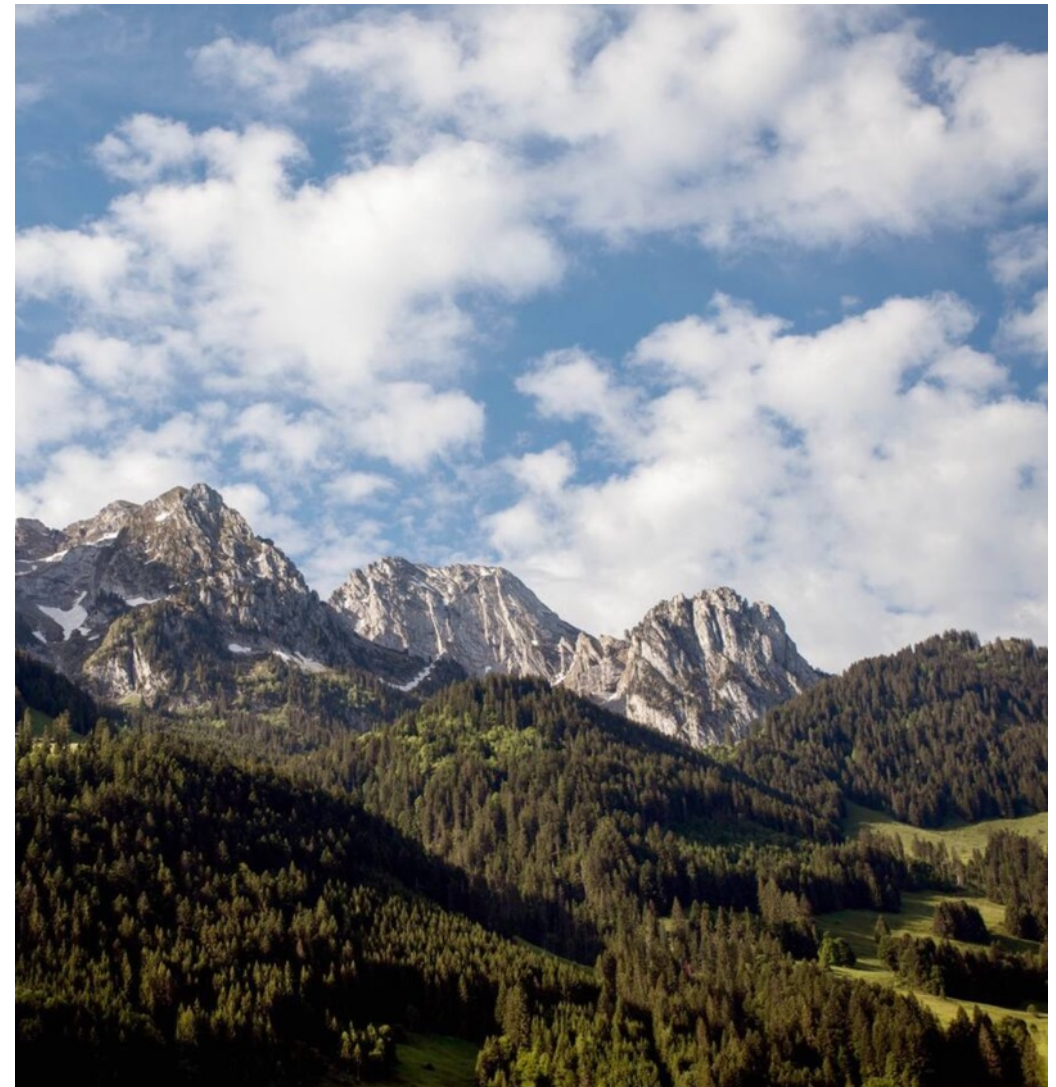
The garden has several types of trees and plants, some who blossom several months a year. The trees are green all year round and the many wooden planters have plants that need no maintenance as they are perfectly adapted to all seasons.

To the end of the south east terrace, there is a large exterior basement that is adapted to store the outdoor furniture during the winter season, stack the wood fire and to keep garden equipment. Another door gives access to a small space ideal to store wine or other beverages.

The large south terrace features a dining table for 6 to 8 guests. The facade of the ground floor is entirely built by hand cut stones. The stone artisans built the façade for more than one year, winter like summer.

Several times a year, the farmers go on the “transhumance”, a seasonal movement of cows between fixed summer and winter pastures. In summer the cows move to the higher pastures and in winter to the lower valleys. From the terrace, one may enjoy seeing the farmers walk with the cows, hear their bells ring and laugh as there is always a more stubborn cow trying to force its way into the surrounding properties.

Whilst on the terrace or in the garden, one may also hear ringing from a distance the bells of the church of Rougemont.





EXTERIOR LOUNGE – SOUTH EAST TERRACE



TERRACE WITH JACUZZI, GARDEN & STAIRCASE LEADING AND EXTERIOR ENTRANCE



EXTERIOR LOUNGE, EXTERIOR BASEMENT AND WINE CELLAR



SOUTH TERRACE

THE HOTEL DE ROUGEMONT

The residences are annexed to the Hotel de Rougemont and benefit from a direct access without going out of the building.

The hotel has 33 rooms and suites located in two wings. Each room has south facing views with either balconies or terraces. The architecture is of a modern atmosphere that breathes and lives the region in which it is set. From the parquet floors, to the stone fireplaces, the natural elements are tamed with soft fabrics through its beige curtains, couches and chairs.

A future owner of the Cerf Rouge can place some of his guests at the hotel and feel comfortable to offer to them a quality hotel. The twelve standard rooms well equipped, stylish and offer great views on the surrounding mountains. The junior suites enjoy gas fireplaces, and the four penthouse suites have wooden fireplaces. The entire decoration of the rooms invites guests into a relaxing and cozy atmosphere.

The spa of around 300 sqm offers three massage rooms, one swimming pool, a relaxing lounge area next to the pool and fireplace, a quality fitness with the latest machines and a hammam and sauna.

With a strong accent on food and beverage, the hotel offers a beautiful restaurant with fireplace, a chefs table within a small wine room, a large lounge bar and second restaurant for events.

One large conference room that may be divided into two and a board meeting room, can offer one to have business meetings and seminars in close range.

Complimentary to the above, there is also a small cinema and a cigar lounge that can be used by the guests. Le Cerf Rouge does not include hotel de Rougemont services and are a la carte. Changes in pricing may vary year to year.





HOTEL DE ROUGEMONT



LOBBY



LOUNGE BAR



RESTAURANT



PENTHOUSE SUITE



CINEMA



INDOOR POOL



WINE ROOM



CONFERENCE ROOM



HOTEL DE ROUGEMONT
LOUNGE BAR

LE CERF ROUGE

ROUGEMONT | SWITZERLAND